



## Economy Ultrablade Pro Surface Mount LED Exit

### Installation & Maintenance Instruction Leaflet



Designed in Australia to comply with the requirements of AS2293.3:2005 and AS/NZ CISPR:15

#### Victoria (Head Office & Manufacturing)

195 Chesterville Rd  
Moorabbin VIC 3189  
Phone: +61 3 9559 2700  
Fax: +61 3 9559 2799

#### New South Wales

Phone: +61 2 8805 6400  
Fax: +61 2 8805 6444

#### Queensland

Phone: +61 7 3442 9700  
Fax: +61 7 3442 9777

#### South Australia/Northern Territory

Phone: +61 8 8301 8800  
Fax: +61 8 8351 8286

#### Western Australia

Phone: +61 8 9248 3720  
Fax: +61 8 9248 3725

#### New Zealand

Phone: +64 800 548 448

#### Models:

EUBPRO-SM-LI

Economy Ultrablade Pro Surface Mount LED Exit

#### Spare Parts:

1560200 – Battery, 3.2 Volt 1.1Ah Li-ion

8002179 – PCA:EUBPRO LED Strip Assy (CT10602-x)

8002983 - PCA: EUBPRO-SM #CT10614-L2

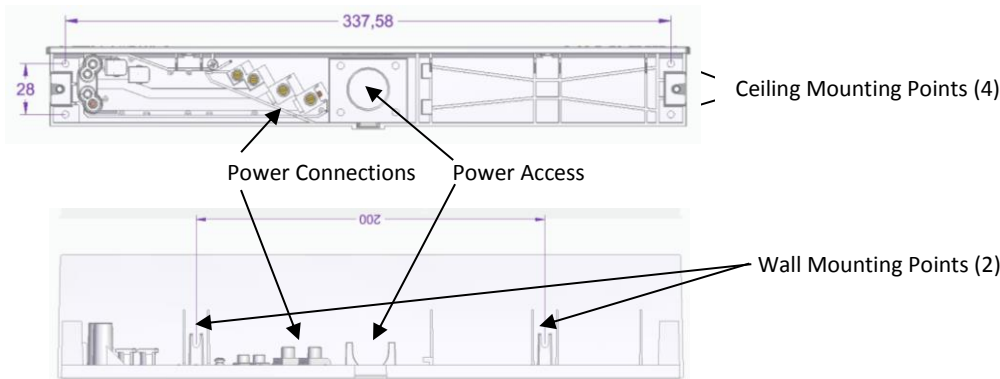
#### Important:

It is illegal for anyone, except for a licensed electrician to install or maintain this product. Before installation, ensure that the electricity supply has been switched off and isolated. Installation must be carried out in accordance with the relevant Australian and International Standards.

## Installation:

The EL Ultrablade Pro Surface Mount LED Exit (EUBPRO-SM-LI) is a surface mount fitting. The EUBPRO-SM can be attached directly to any solid surface. Please follow the steps below to install the EUBPRO Exit:

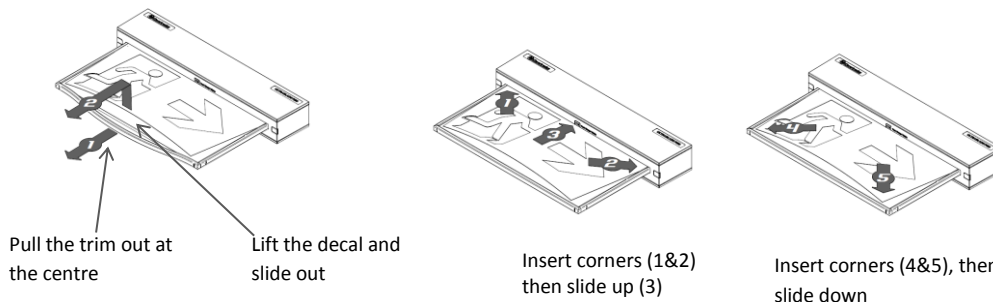
- Open the fitting using the 2 screws on either side of the blade.
- Locate the mounting surface.
- Drill holes in the mounting base to suit the mounting method, Ceiling or Wall (see images below).
- Use the mounting bracket to mark-out the mounting holes for Ceiling or Wall Mount.
- Drill power access hole as required.
- Mount the fitting using appropriate fixings.
- Route the power to the mains connection and connect the 240VAC supply.
- Attach the blade assembly to the bracket and tighten the 2 mounting screws.
- Apply power to the fitting and test.



## Changing EXIT Legend Inserts:

The Ultrablade Pro Exit comes with an assortment of standard legends.

1. To remove the legend, grasp the centre of the bottom trim piece and pull down slightly to expose the legend edge. See photo.
2. Grasp the bottom edge of the legend and slide the existing legend out of the blade, while working the edges out along the sides.
3. Slide the new legend into the blade, ensuring to fit the edges into the sides then slide the legend to the top of the blade. Insert one bottom corner then the other. Slide the legend down into the bottom trim.



## Testing:

Once connected to the 240V mains supply, the unit must be allowed to charge the battery for at least 24 hours. Conduct the following tests:

- For the first test, the emergency lamp must remain illuminated for at least 2 hours after disconnection from the mains supply.
- Subsequent tests require the unit to illuminate for at least 90 minutes. The results of all tests are required to be recorded in a service logbook, which is to be kept on-site at all times. If the unit fails to remain illuminated for the requisite time, remedial action must be taken to repair the situation and once completed, the unit must pass a subsequent test. For more specific information, please refer to the current edition of the AS 2293.3 Standard.

## Ultrablade Maintenance:

### LED Lamp Replacement:

- Use only the LED Strip recommended in the Spares Parts list of this instruction.
- Disconnect battery from LED driver.
- Remove the screw holding the driver PCA. Remove the PCA.
- Remove the 4 screws holding the battery bracket. Remove the bracket with the battery.
- Disconnect the signal cable from LED strip.
- Remove 4 self-tapping screws and unclip the LED strip.
- Install the new LED strip following the above procedure in reverse.

### Battery Replacement:

- Use only the battery recommended in the Spares List on this instruction.
- Remove the battery from battery compartment, un-plug the lead from the battery connector remove the old battery.
- Plug the new battery into the battery connector.
- Secure the battery into the battery compartment

## Trouble Shooting:

Below are a list of common problems and their possible causes.

<b>Fault:</b>	<b>The Green LED Test Switch indicator is not illuminated.</b>
Check:	A.C. is connected and is turned on. Battery is connected Test Switch for damage.
<b>Fault:</b>	<b>Lamp does not illuminate in emergency mode.</b>
Check:	A.C. is connected. Lamp is correctly inserted. Battery is connected
<b>Fault:</b>	<b>Lamp illuminates in emergency mode, but only stays on for a short period.</b>
Check:	Battery has been allowed to charge for at least 24 hours. Battery for damage.
<b>Fault:</b>	<b>Green LED flashes once every 5 seconds-Battery is disconnected</b>
Check:	Battery is connected.
<b>Fault:</b>	<b>Green LED blinks off once every 5 seconds- Charging very flat battery</b> Allow 20min to recover battery then recheck
<b>Fault:</b>	<b>Green LED flashes at 2Hz (Fast flash)- Faulty battery</b> Replace battery

## Rated Emergency Lumen Output in accordance with AS2293.1 (refer to spacing tables for installation positions), not Included –TH version:

C0=E6.3 (8m) C90=E6.3 (8m)

## Caution:

On many building sites, power circuits may be cut off in an uncontrolled and repetitive basis during construction. As a result, any Exit & Emergency Units, on these circuits, will have their batteries discharged or "cycled". The battery in this fitting has been selected to give excellent long-life performance in a controlled AS2293 testing environment. Excessive battery cycling will reduce through-life performance and may lead to premature battery failure. Battery warranty claims, as a result of such abuse, are specifically EXCLUDED from Clevertronics warranty terms.

## Warranty:

For Product Warranty information and Terms and Conditions of Sales please refer to our website <http://clevertronics.com.au/terms-conditions-sale-australia-nz>